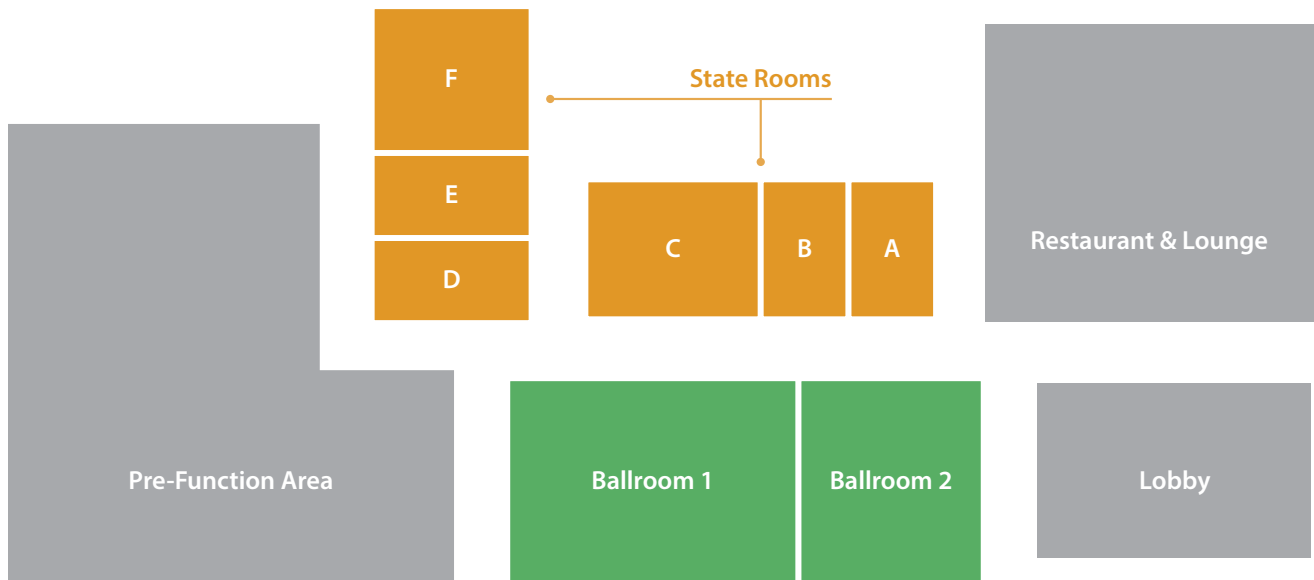




# Find Your Way Around



## Key Event Locations

### CYN Summit

Ballrooms 1 & 2

### Breakout Sessions Round 1 :: 9:30 AM

Launching or Growing a Young Leaders Group :: State Room A

Modern Marketing :: State Room B

Creating Social Innovation :: State Room D

The BIG Give :: State Room E

Xtreme Creativity in Action :: State Room F

### Breakout Sessions Round 2 :: 3:00 PM

Agriculture & Community Collaboration :: State Room A

Plan with a Pro :: State Room B

The Run for Public Office :: State Room D

Rules to Live by :: State Room E

Start with Talent, Finish with Strength :: State Room F

# About CYN

Connecting Young Nebraskans (CYN) is a statewide network of 21- to 40-year-olds, and is designed to connect, empower and retain young Nebraskans. CYN strives to enhance opportunities for individuals to impact their communities through networking and learning experiences. The network is a dynamic and diverse group of peers with a passion for making a difference, a willingness to learn, and the desire to build important relationships to help shape the future of Nebraska.

CYN began in 2009 following several listening sessions held across the state with young citizens. What resulted from these conversations was a need to connect, empower and retain young Nebraskans. Thus, the network was formed. Out of these initial conversations a group of individuals volunteered to lead this effort and became the first CYN Steering Committee. Kayla Schnuelle, who works for the Rural Futures Institute at the University of Nebraska, coordinates the network, and with the support of the University, has worked to lead a grassroots effort based on the recommendations from the steering committee.

Shortly after the formation of the steering committee, a brainstorming session held in Grand Island led to the development of the first annual CYN Summit, which was held in October 2010. Over the next couple of years there were summits in West Point, North Platte and now Kearney. Through these summits, CYN strives to create a more connected Nebraska through education, empowerment and leadership. While members come from a variety of professions, all have a passion for making a difference and the desire to build important relationships. Although the network is primarily 21- to 40-year-olds, CYN believes that 'young' is a mindset and invites people of all ages to join the network.

## CYN Believes

- Young Nebraskans are an untapped social resource that is often overlooked in communities and organizations.
- Young Nebraskans can provide a vital infusion of ideas, energy and passion for the state, and their involvement is critical in building a strong future for Nebraska.
- Young Nebraskans must make a serious, long-term investment in the next generation – now. Through engagement and networking, future leaders gain the tools and skills they need to make tomorrow's big decisions.
- Across the state there are many similarities as well as differences, but by sharing interests, concerns and ideas, CYN can engage and educate young Nebraskans to create actionable next steps to drive progress in the state.

## you. me. NE.

This year CYN has a new look—you. me. NE. The cool part about this year's summit is the fact it wasn't coordinated by one community. Instead, it has been a collaborative effort of the tri-cities—Kearney, Hastings and Grand Island. With this mind-set of working together as a region, the summit is a true example of what it takes to cross boundaries and defy past challenges to undertake something new and exciting.

you. me. NE. encourages self-reflection and realizing what it takes to dig deep and find the true meaning of existence. Then, thinking about our neighbors and their needs, and finally, thinking about the collective whole, the state of Nebraska and those who call it home. What will make Nebraska great 20 years from now? What will it take to build stronger communities, companies and collaborations? This summit will encourage you to think about these big, important questions.

**Thanks for joining us and enjoy the summit!**

# Summit Schedule

Kearney, Nebraska :: Friday, November 7

**7:30 AM** Registration & Light Breakfast

**8:00 AM** Welcome :: Chuck Schroeder, Founding Director, Rural Futures Institute

**8:10 AM** you. me. NE. :: Kayla Schnuelle, CYN Coordinator, Rural Futures Institute

**8:30 AM** Coffee Shop Discussions: Coffee, Conversation, Issues That Matter  
*Sponsored by the Nebraska Community Foundation*

**9:15 AM** Snacks and Refill Break

**9:30 AM** Breakout Sessions Round #1 :: *see next page for details*

**10:20 AM** Return to Ballroom

**10:30 AM** Understanding Your Community: Living in a State of Poverty :: Ruth Vonderohe, UNL Extension  
*Sponsored by DuPont Pioneer*

Nearly 1 in 8 people in rural Nebraska were living in poverty in 2010 (2010 Census Data). Poverty and food insecurity are social issues that affect thousands of Nebraskans. Young Nebraskans will be better equipped to lead their communities if they understand the needs and living situations of all community members. With the support of DuPont Pioneer, join Ruth and the CYN steering committee to understand what it might be like to be part of a typical limited-resource family trying to survive. After experiencing the realities that confront limited-resource families, we will engage in a conversation addressing poverty and food insecurity issues in Nebraska communities.

**12:15 PM** Lunch with Entertainment Provided by DeWayne Taylor  
*Sponsored by DuPont Pioneer*

**1:10 PM** DuPont Pioneer :: Mat Habrock, Communications Manager

**1:30 PM** Brave New Leadership :: Joe Gerstandt, Author, Innovator and Creator  
*Sponsored by Grand Island Area Economic Development Corporation*

Put the power of authenticity, divergent thinking, and constructive conflict to work toward driving more creativity and innovation. While we love the ideas of creativity and innovation, we do not so much care for the messy and noisy chemistry that drives them. Innovation feeds off diversity of thought, conflict and experimentation—all things that we tend to avoid. Understand the social architecture and individual practices required to unleash creativity and innovation in your organization, community or collaborative effort.

**2:30 PM** Networking Break  
*Sponsored by Adams County Convention & Visitors Bureau*

**3:00 PM** Breakout Sessions Round #2 :: *see next page for details*

**3:50 PM** Return to Ballroom

**4:00 PM** So What, Now What?  
*Highlight video, iPad drawing, and closing remarks*

**4:45 PM** Travel Safely

*All events will be in the ballroom except for the breakout sessions.*

## Breakout Sessions Round #1

---

### **Launching or Growing a Young Leaders Group** :: Eli Aguilar, Mary Berlie, Jamie Henning & Andrea McClintic

*State Room A*

Do you want to make an impact as a young leader in your community? Join this quartet who have created (or improved) their local Young Professionals Group (YPG) and discuss the opportunities and challenges of launching or growing one in your own community. Learn from diverse YP's on how these groups are set-up, managed, and how they host events and engage other young leaders.

### **Modern Marketing** :: Lukas Rix & Mark Kanitz

*State Room B*

Take a look at Facebook marketing from an entrepreneur's point-of-view. Learn how to effectively grow your organization/business with a strong social media presence. Learn how to design and implement an ad within Facebook and how to make it attractive to your viewers.

### **Creating Social Innovation** :: Ean Garrett & Aledia Kartchner

*State Room D*

Self-Discipline | Self-Responsibility | Persistence | Fearlessness | Excellence | Foresight | Character | Humility

These eight elements of change and growth are used in the Infinite 8 Institute created by Ean Garrett. Ean and marketing director Aledia Kartchner will prepare individuals to be resilient and sustainable in the new global knowledge-based economy. The pair will utilize the methods of the Infinite 8 Institute to help create positive change in the hearts and minds of summit attendees.

### **The BIG Give** :: Becky Ries & Kristina Foth

*State Room E*

Want to develop a culture of philanthropy in your community? Discover how to rally businesses and individuals around charitable giving by learning about the BIG give, a 24-hour event designed to raise money for local foundations and non-profit organizations. Valley County Philanthropic Partners will share successes and challenges of how to collaboratively create a BIG give that makes a BIG difference in your community.

### **Xtreme Creativity in Action** :: Melissa Garcia

*State Room F*

Ever been discouraged by the 'reasons' something can't be accomplished? What if we stepped back in time and solved problems with the same faith and creativity as a child? Inspired by 9-year-old entrepreneur Caine Moyer, rediscover how to be creative with a 'box' and ingenuity to build solutions and turn play into action.

## Breakout Sessions Round #2

---

### **Agriculture & Community Collaboration** :: Anita Wollenburg

*State Room A*

How are communities supported by agriculture? Agriculture is a powerful economic engine for Nebraska, but what can you do to strengthen the relationship between agriculturalists and community development initiatives? A community is strongest when there is a shared understanding of the goals and vision for the future. Join Anita to explore how to yield greater engagement between the community and agricultural industry.

### **Plan With a Pro** :: Kelli Watson

*State Room B*

Attorney Kelli Watson will discuss why it's important from an emotional and financial perspective for young adults to have a will, powers of attorney for finances and health care, a living will, and in certain situations, a trust. Kelli will also discuss the probate process, estate and inheritance taxes, and avoiding unnecessary expenses during your lifetime and upon death through proper planning. This session will focus on planning for young adults and their families.

### **The Run for Public Office** :: Jonathan Nikkila

*State Room D*

Running for public office is challenging. Being a young leader running for public office introduces a unique set of challenges. Local governments need your ideas, leadership, and energy. But first, how to get there... determine your readiness for office, how to run a campaign, and understand the investment of doing so while Jonathan shares the value of serving in this capacity and why it's important to do so.

### **Rules to Live by** :: Chais Meyer

*State Room E*

Rule #1: Create your own rules. Join entrepreneur Chais Meyer as he shares his story of what living like an entrepreneur is all about. Failing fast and failing often, learning from respected individuals, and challenging comfort zones is part of the process. While challenges face those who are bold enough to start something of their own, "the juice is definitely worth the squeeze". So if you find yourself blindly following rules defined by others, join Chais to establish your own unique set of rules.

### **Start with Talent, Finish with Strength** :: Nicole Sedlacek

*State Room F*

Want to be more productive, more engaged, and happier? Identify your natural talents and explore how to turn these talents into strengths. Lead with your strengths and do what you do best everyday. The result? Engagement, productivity, and happiness. Utilize your strengths to create a larger impact in your organization and community.



# Joe Gerstandt :: Keynote Speaker

author, innovator, and creator



Joe Gerstandt:

- Grew up on a family farm in NW Iowa
- Served four years in the United States Marine Corps, including participation in Operations Desert Shield and Desert Storm
- Earned a B.S. in agricultural business from Iowa State University, which he is currently putting to good use!
- Spent six years working in management and business development for technology and communication companies
- Made a career change and went to work for a grassroots non-profit organization where he found himself drawn to issues related to diversity, inclusion, leadership and community building

Today, Joe works with Fortune 500 corporations, small non-profits, and everything in between. He speaks at numerous conferences and summits, and blogs at [joegerstandt.com](http://joegerstandt.com). He is a featured contributor to Diversity Best Practices and to the Workforce Diversity Network Expert Forum. His insights have been published in Diversity Executive, HR Executive, The Diversity Factor, The American Diversity Report, the Corporate Recruiting Leadership Journal, Associations Now and other print and on-line journals.

He co-authored the book *Social Gravity: Harnessing the Natural Laws of Relationships*, and serves on the board of directors for the Global Diversity and Inclusion Foundation, the Talent Management Human Capital Executive Research Board, the Chief Learning Officer Business Intelligence Board and the HR Examiner Advisory Board.

Today, Joe is a strong advocate for resetting conversations related to diversity and leadership, and believes we cannot afford to continue applying a 20th century approach to increasingly critical 21st century issues.

Joe lives in Omaha, Nebraska with his patient, kind, and loving wife; two daughters, a son, a dog, and a frog.

“We live in a time of great and far-reaching change. Our organizations, institutions and communities are increasingly in need of a new way of leadership. How incredibly fitting it is, for us to gather in this place with a great pioneering tradition to work towards charting a new way forward.”

-Joe

# CYN Summit Emcee



**Anders Olson**, Affiliated Fund Development Coordinator, Nebraska Community Foundation

Anders Olson, a native of Tekamah, is an affiliated fund development coordinator for the Nebraska Community Foundation in Norfolk. He is a UNL graduate in Agribusiness with a minor in Agricultural Leadership and Communications. He has interned for Case IH Agriculture and Lee Valley Auction & Realty. In college, Anders held leadership roles with Alpha Gamma Sigma Fraternity, Dance Marathon, and the Nebraska Human Resources Institute. He was a member of the Innocents Society and has received several FFA awards including national proficiency winner in Ag Sales Placement.

# Lunch Entertainment



**DeWayne Taylor**, Beatboxer

D-Wayne started beatboxing his freshman year of high school as something to fill his time. After a lost bet during his senior prom, he held his first performance in front of 600 students and since has elected to showcase that beatboxing is an art form like singing and dancing, not a gimmick. Since adopting this stance, D-Wayne has performed in front of tens of thousands of people and has been featured across the United States. D-Wayne has also performed at the Lied Center for Performing Arts and spoke at TEDxLincoln.

Today D-Wayne is a full time emcee, speaker, and beatboxer based out of Lincoln. He is a sushi slammer and Twizzler lover who is here to share the evolution of beatboxing!

# Facilitator :: Understanding Your Community: Living in a State of Poverty



**Ruth Vonderohe**, Extension Educator, University of Nebraska–Lincoln

Ruth Vonderohe is an extension educator at the Northeast Research & Extension Center for the University of Nebraska–Lincoln. As a Learning Child Team Leader with over 10 years of experience in human service related environments, Ruth has experience working with mainstream and diverse populations. Ruth brings value to teams she leads because she is highly skilled, dynamic, dedicated, and results-oriented; making her an effective motivator and team player. She is recognized for her ability to establish and maintain solid relationships with co-workers, administration, children, and parents; as well as a resourceful and reliable educator with the ability to increase the quality of learning experiences for young people and adults.

Event photography provided by [Brett Hampton](#) of Hampton Photography

Event videography provided by [Brian Kreikemeier](#) of B&B Video Productions, Inc.

# Breakout Session Speakers



**Eli Aguilar**, Regional Relationship Manager, AIM Institute

---

Eli Aguilar has been a member of the AIM Institute in Scottsbluff since November 2006. He earned his B.A. in psychology with a minor in business from Chadron State College. Eli has served on the Leadership Scotts Bluff Board of Directors and NEXT Young Professionals Board of Directors. Currently, he serves on the Center for Rural Affairs-Rural Investment Corporation (RIC) Advisory Board and Legal Aid of Nebraska Board of Directors.

In his spare time, Eli enjoys playing recreational sports like softball and volleyball, and he recently finished running his first half marathon. Eli has three children, Eli Jr., Gianni and Olivia.



**Mary Berlie**, Executive Assistant, Grand Island Area Economic Development Corporation

---

A Grand Island native, Mary Berlie, is the executive assistant at the Grand Island Area Economic Development Corporation (GIAEDC). The GIAEDC focuses on job creation and business expansion in the Grand Island community.

Mary is involved in the Grand Island Young Professionals Group, Connecting Young Nebraskans summit host team, and Vote Yes for Kids school bond issue. When not working, Mary enjoys traveling, supervising her husband during home renovations, and testing new recipes. Mary and her husband, Joshua, have one daughter, Piper.



**Kristina Foth**, Assistant Chamber Director, Ord Area Chamber of Commerce & Valley County Economic Development

---

Kristina Foth has worked as the assistant chamber director for the Ord Area Chamber of Commerce and Valley County Economic Development since 2011. She discovered her passion for rural community development while serving as the marketing intern for the chamber and economic development office during the summers of 2009 and 2010. Kristina serves as a member of the Core Design Team for SynoVation Valley Leadership Academy and is also an active member of Valley County Philanthropic Partners, a non-profit group that coordinates The Big Give to Valley County.

Kristina and her husband Bryant reside on their farm and ranch operation south of Ord.



**Melissa Garcia**, President, Custer Economic Development Corporation

---

Almost three years ago, Melissa Garcia returned to her hometown in rural Nebraska and began work with the Custer Economic Development Corporation Board making creative solutions come to life for the growth of Broken Bow and the surrounding region. Prior to the move, Melissa was the director for Mid-Plains Center for Enterprise at Mid-Plains Community College. She is an Accredited Business Plan Advisor and a Certified Contract Trainer.

She has been married to her husband, Chad, for 12 years and has two beautiful girls, Kennedy and Grace.





**Ean Garrett**, Author & Speaker, Infinite 8 Institute

---

Ean created the Infinite 8 Institute with the goal of changing the world by preparing individuals, organizations, and communities for resiliency and sustainability in the new global knowledge-based economy.

He is a native of Omaha and received his B.A. in legal communications and political science from Howard University and his J.D. from the University of Nebraska College of Law. In 2012, he released his literary debut, *Rebirth of a Dream: A Young Black Man's Fearless Mission to Resurrect His Father's Vision*, highlighting the patterns of thought and behavior that were key to his success. Ean recently conducted a Poverty of the Mind Tour, speaking about the benefits of non-cognitive development on psychological poverty.



**Jaime Henning**, Director of Corporate Relations, Lincoln Chamber of Commerce

---

Jaime Henning, IOM, CCE is the director of corporate relations for the Lincoln Chamber of Commerce. Henning is one of two CCE's in the state of Nebraska and 520 in the U.S. to earn this distinguished certification. She sat on the Board of Regents for the U.S. Chamber of Commerce Winter Institute and is the leader of Lincoln's Young Professionals Group. She helped lead major initiatives including Lincoln's first ever Young Professionals Week, Lincoln Logs Guinness World Record Attempt, Lincoln's rebranding effort and YP advocacy for the Pinnacle Bank Arena. She is a community builder and public relations guru who likes to kick the tires and light the fires. It's great to live in Lincoln #Life is Right!

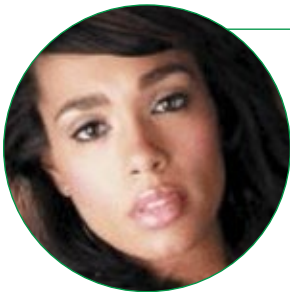


**Mark Kanitz**, Co-Owner, Rustic Treasures

---

Mark Kanitz is the co-owner of Rustic Treasures in Wayne, Nebraska. He manages the day to day operations of the store and oversees the entire social media campaign for the store. His degree is in parish music from Concordia University, which provides him with a very artistic way to look at marketing the unique products of the store.

Mark is also the music director at the local ELCA Church. Residing in Wayne, Nebraska with his partner Lukas, their business is right in the historic downtown district. They enjoy being active in the community and working on their 1893 Victorian Home.



**Aledia Kartchner**, Marketing Director & Certified Instructor, Infinite 8 Institute

---

Author and national speaker, Aledia Kartchner, is currently the marketing director and a Certified Instructor for Infinite 8 Institute. Aledia modeled from the age of four and became a professional hip-hop dancer. She has also performed at other nationally televised venues, such as the Radio Music Awards and the BET Source Awards.

In 2013, Aledia released her literary debut, *Inside Out*, as a dramatic and inspiring account of her personal and spiritual transformation. Aledia also toured the United States for the Infinite 8 Poverty of the Mind Tour, visiting eight cities in eight days in an effort to address psychological and material poverty.

Aledia currently resides in Nebraska with her two sons, Orlando and James.

# Breakout Session Speakers



**Andrea McClintic**, Associate Director of External Relations, University of Nebraska–Lincoln

---

Andrea McClintic just made a big change and moved to Lincoln, Nebraska, after twelve years in Kearney. She is the associate director of external relations for the University of Nebraska–Lincoln Career Services. When she isn't found traveling for evening work presentations or volunteering for one of the numerous nonprofits close to her heart, she spends time watching or playing sports or cuddling with her two pound puppies, Harlee and Bella!



**Chais Meyer**, Entrepreneur & Co-Founder, 24 Hour Tees

---

Chais Meyer, a happily married man of 11 years, was born and raised in Kearney, Nebraska. He began building businesses in high school, and; in terms of cash flow and sustainability, these businesses were, perhaps, lacking. They were, however, key in developing his entrepreneurial knowledge.

Chais is a natural creator and problem solver. He fine-tunes these talents with every project, which gives him the opportunity to build a brand, business, or solution. Chais values a good team more than a good business any day of the week, and his recipe for success is having a solid team of people working towards one purpose with an equal passion and different skill sets. The journey of creation, risk and continual learning is the reason Chais loves being involved in business.



**Jonathan Nikkila**, Kearney City Council Member

---

Jonathan Nikkila, a Kearney native, is the director of government affairs for the American Federation for Children, a national public policy organization based in Washington, DC, that focuses on K-12 education. Jonathan has been a member of the Kearney City Council since 2012 and previously served as a member of the city's Board of Adjustment. Additionally, Jonathan is a member of the Sertoma Club, the Kearney Area Chamber of Commerce, and served on the board of Kearney's Young Professionals Network.

Jonathan and his wife, Miriam, have four children, ages 8, 6, 4 and 1. He is a running enthusiast and coaches distance track and cross country for Kearney Catholic High School and runs in area 5k races.



**Becky Ries**, Executive Assistant, Valley County Health System

---

Becky Ries is the executive assistant of the Valley County Health System in Ord, Nebraska and previously worked as the executive director of the Valley County Health System Foundation. She enjoys volunteering in her community and has served as a TeamMates mentor for the past eight years, as well as serves on the local Chamber Board, the CYN steering committee, Jaycees, the hospital's Child Development Committee and the Valley County Philanthropic Partners (VCP). She was involved in helping the VCP group start The Big Give to Valley County in 2013.

Becky is married and has two children; a daughter who is married, lives in Lincoln, and who just gave birth to Becky's first grandchild, and a son who is an 8th grader at Ord Jr/Sr High School.

Becky currently holds the title of Mrs. Sandhills and will be competing in the Mrs. Nebraska pageant on November 15th in Omaha, NE.



**Lukas Rix**, Co-Owner, Rustic Treasures

Lukas Rix is the co-owner of Rustic Treasures, a 6,000 square-foot thrift store in Wayne, Nebraska. In May of 2012, he and his partner opened the business and immediately started seeing results from having an aggressive social media campaign. Currently sitting at over 6,000 “likes” on Facebook, their product is pushed in front of thousands without anyone ever stepping foot in their store.

Lukas earned his business marketing/management degree from Wayne State College. In addition to the store, Lukas works for Sand Creek Post & Beam based out of Wayne, Nebraska that serves a national market.



**Nicole Sedlacek**, Gallup Certified Strengths Coach, Holt County Economic Development

Nicole Sedlacek is a Gallup Certified Strengths Coach. Her top five strengths are Input, Learner, Focus, Achiever, and Discipline. She desires to build strong and engaged teams and organizations to maximize their potential and productivity. Nicole strives to help every person she comes in contact with to understand their natural talents and then work to develop those talents to be a world-class performer. This will lead to improvement in productivity, engagement, and profitability.

Nicole also serves as the executive director for Holt County Economic Development organization where they are working to make Holt County a strengths-based county. Nicole is involved with Holt Young Professionals (HYP), Rotary, TeamMates, and the Nebraska Economic Developers Association.



**Kelli Watson**, Attorney, Fitzgerald, Schorr, Barmettler & Brennan, PC, LLO

Kelli Watson grew up on her family’s cattle ranch near Valentine, Nebraska. She attended college at UNL where she served as president of Kappa Kappa Gamma sorority. Kelli attended law school at the University of Nebraska College of Law and is now an attorney at the law firm of Fitzgerald, Schorr, Barmettler & Brennan, PC, LLO, located in Omaha, Nebraska. Kelli’s practice areas include estate planning, guardianships and conservatorships, business planning, and real estate planning. She advises clients on structuring their estate plans to address their specific needs and assists with the preparation of wills, trusts, durable powers of attorney and living wills. Additionally, Kelli assists clients with entity formation, and other business planning matters, and with real estate transactions.

Kelli lives in Omaha with her husband, AJ, and their two dogs. In her free time, Kelli enjoys spending time with friends and family, reading, and traveling.



**Anita Wollenburg**, State Officer Manager and Director of Student Leadership Programs, Nebraska FFA

Anita Wollenburg is a mom, agriculturist, maximizer, relator, thinker, writer, educator, facilitator, developer, list maker and purpose definer.

A native of Stuart, Nebraska, she attended UNL while serving as a leader in Nebraska and National FFA. After college, she was the agriculture instructor in Wilber. After leaving the classroom, Anita began working with student leaders in Nebraska Career Student Organizations and is currently the Nebraska FFA State Officer Manager and Director of Student Leadership Programs. Anita believes that all students deserve to be surrounded by family and community members who believe in them.

Anita resides in Seward with her daughters, Mackenna and Sawyer. She appreciates witnessing her children’s constant discovery and values her role in their individual learning.

# CYN Steering & Host Team

The CYN Steering team is a group of self-identified individuals that help guide the direction and activities of the entire CYN network. The hard work and commitment of these individuals contributes to the success of CYN. The CYN Summit Host Team is comprised of individuals from Kearney, Grand Island, and Hastings. This team helped plan the logistics for this year's summit. They are also excellent resources for this region of the state. If you are interested in serving on either of these teams, contact Kayla at [kschnuelle@nebraska.edu](mailto:kschnuelle@nebraska.edu).



**Ginger Ady** has worked for North Platte Visitors as the Group Tour and Meeting/Convention Specialist for the last 6 years. In her spare time she enjoys spending time with her husband and son.



**Valerie Bren** is the workforce development coordinator for the Grand Island Chamber of Commerce. She has a love and passion for all things coffee. She enjoys hanging out with family and friends, reading, cycling, and binge watching TV shows on Netflix.



**Eli Aguilar** has been a member of the AIM Institute in Scottsbluff since 2006. He earned his B.A. in psychology with a minor in business from Chadron State College. Eli has three children, one boy, Eli Jr., and two girls, Gianni and Olivia.



**Garry Clark**, raised in Washington, D.C., is the economic development director for Cuming County. Garry enjoys writing, playing basketball, running and spending time with his wife Tina and daughter Azlyn. Garry is a national champion track athlete from Dana College and earned his Master's in urban studies/public administration at UNO.



**Mary Berlie** is a Grand Island native, involved in the Grand Island Young Professionals Group and Vote Yes for Kids school bond issue. When not working, she enjoys traveling, supervising her husband's home renovations, and testing new recipes. Mary has one daughter, Piper.



**Tiffany Crouse** is left handed, fears salad bars, loves guacamole, and has two co-creations with her husband. She's also the outreach coordinator for the Adams County Convention and Visitors Bureau in Hastings.



**Tina Biteghe Bi Ndong** is a mom and a wife with a really cool day job, the Executive Director of the West Point Chamber of Commerce. She loves humans, 3-day weekends, flip flops, "pinning," Groupon, champagne and all things interesting enough to read about.



**Melissa Garcia** is president of the Custer Economic Development Corporation, mom to two adorable girls, Crazy Running Lady to neighbors, and Super Wife to her husband. She is looking forward to collectively creating an amazing future for Nebraska.



**Wes Blecke** coordinates awesomeness in the Wayne area. Coaching sports, raising three children, and watching Dead Poet's Society consume his spare time. He also plays a mean hand of Pinochle.



**Andrea Gebhart** is a source of creativity at JEO Consulting Group, Inc. She is a middle sister, DIY whisperer, realist, Aquarius, and coffee lover. She is also a proud mom of a chocolate Labrador named Mocha Jo.



**Jill Green**, classified advertising supervisor for the Kearney Hub, has a passion for health and wellness, and loves connecting with people. When she's not at work, she enjoys spending time with friends and family, seeing movies (mostly for the popcorn), and trying new things!





**Jessica Hendricks** is passionate about the state of Nebraska and feels there is no better place to live than our great state. She enjoys being involved in her community and working on home improvement projects.



**Penny Parker**, marketing coordinator for the Kearney Hub, is a mom to two boys and the other half to a wonderful guy. She loves being active in her community, and when she's not working or volunteering she enjoys volleyball league and catching up on her favorite show, Doctor Who.



**Jonathan Jank** is the executive director for the Seward County Economic Development Corporation. Jonathan and his wife, Rachel, love living in Seward County where they own a rental property business, volunteer together as youth group leaders in their church, and enjoy making music at various gigs around the community.



**Crystal Ramm**, is passionate about education, bugs, and Nebraska, and graduated from UNL with her PhD in Entomology. As the Central Community College Ord Learning Center manager, she has the rare opportunity to work in higher education in a rural location utilizing all of her passions. She also has a beautiful four-year-old daughter, Tenley.



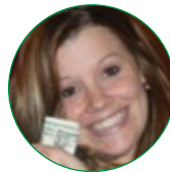
**Chris Kreikemeier** was born and raised in West Point, Nebraska where he now manages the Nielsen Center and lives with his wife, Tiffany, and two children, Hailey and Braxton. Chris is competitive in any sport and has a very outgoing personality. Most importantly, he loves to see young people get involved in the community.



**Becky Ries** is very involved in her community and loves Nebraska! She is the executive assistant of the Valley County Health System in Ord. She enjoys volunteering, cooking/baking, running 5K's, spending time with her family and friends and is excited to be competing as Mrs. Sandhills in the Mrs. Nebraska Pageant on November 15th.



**Ashley Lytle** is the marketing and promotions coordinator for Miller & Associates Consulting Engineers. She has lived in Kearney for over three years, and has grown to love the small town atmosphere with big city amenities that Kearney provides. Ashley is active in the Kearney Area Young Professional's Network, Dobytown Kiwanis, and volunteers with United Way.



**Kayla Schnuelle** is passionate about people and the quality of life in Nebraska. As the coordinator of the CYN network, she loves meeting the amazing people from across the state. Kayla and her husband, Joey, have one son, Lane, and are expecting double trouble (twins) in February.



**Andrea McClintic** is the associate director of external relations for UNL Career Services. When she isn't on the road for evening work presentations or volunteering for one of the numerous nonprofits close to her heart, she is spending time watching or playing sports or cuddling with her two pound puppies, Harlee and Bella!



**Mike Wilken**, president and agent at Beacon Insurance, has a better half, Kylie, and son, Kyler. Mike is involved with numerous organizations in the community and when spare time comes up he's on the golf course or in the deer stand.



# CYN Summit Sponsors

PLATINUM



GOLD



SILVER



## BRONZE



## IN-KIND



## SPECIAL THANKS TO

The 2014 CYN Steering Committee for their hard work and commitment to CYN.

The Host Community Team for their hard work and dedication to the summit.

The Kearney community and tri-city region for its hospitality and excitement.

The 2014 CYN Summit speakers for sharing their knowledge and expertise.

---

---

# UNDER 40

*award*

---

---

## *Honoring Nebraska's Exceptional Young Leaders*

Nebraska is home to 1.8 million people. 27% of Nebraskans are between the ages of 21-40. These 480,000 people are helping to build the future of Nebraska. These Nebraskans are **energetic, dedicated, passionate, futuristic, difference makers**. An irreplaceable asset to Nebraska. *We want to honor these young leaders.*

### ***Why?***

Because their leadership matters. The impact they make in their community matters. And Nebraska needs them to realize a brighter future for the generations to come.

Institute of Agriculture and Natural Resources, Rural Futures Institute, and Connecting Young Nebraskans are honoring exceptional young Nebraska leaders through the Under 40 Award. Leaders under 40 have helped our communities grow, thrive, and think futuristically. These leaders will be honored for their success in advancing the quality of life celebrated by Nebraskans.

Nominations, applications and details will be released in January. Until then, connect with us at **[facebook.com/youngnebraskans](https://www.facebook.com/youngnebraskans)**.

UNIVERSITY OF  
**Nebraska**<sup>®</sup>

---

The University of Nebraska is an Affirmative Action/Equal Opportunity institution.